



Materials Included

Refer to the separate “pick” list for details on part numbers and quantities.

Recommended Tools:

- Cordless drill or impact driver
- Wrenches
- Tape measure
- Deep socket set with an adaptor for your drill
- Hammer
- Sharpie markers

Contents

PARTS LIST.....	2
PARTS LIST (VARIOUS LENGTHS)	2
ILLUSTRATED PARTS ASSEMBLY ILLUSTRATED PARTS ASSEMBLY CONTD.....	3
ABOVE GROUND BENCH WIDTH PROFILE	5
ABOVE GROUND BENCH LENGTH PROFILE.....	6
STEP 1: ASSEMBLY OF BENCH FRAME.....	7
F-BAR EXTRUSION INSTALLATION OPTIONS	10
STEP 2: BENCH TOP SUPPORT INSTALLATION	11
STEP 3: EXPANDED METAL TOP INSTALLATION	2
STEP 4: CORNER PROTECTOR INSTALLATION	2
LIMITED WARRANTY.....	3
LIMITATION OF LIABILITY	3
JURISDICTION	3

PARTS LIST

DESCRIPTION	PART NUMBER
BENCH CLAMP SET (2) ALUMINUM PIECES WITH (4) HEX BOLTS & NUTS	BENCHCLAMP+L
BENCH TOP SUPPORT SELECT BENCH SIZE BELOW	SEE BELOW
END F-BAR EXTRUSION SELECT BENCH SIZE BELOW	SEE BELOW
BENCH LEG (30")	BPLEG30+LP
LENGTHWISE LEG BRACE	BPLL132+LSB
SIDE F-BAR EXTRUSION	BPSFBAR108+LP
SIDE F-BAR EXTRUSION	BPSFBAR120+LP
WIDTHWISE LEG BRACE SELECT BENCH SIZE BELOW	SEE BELOW
BENCH CORNER PROTECTOR	BPZCP+LH
EXTRUSION SPLICE (1" SQ)	BPZFBS+LH
#8 X 1/2" SELF DRILLING/SELF TAPPING PAN HEAD	FC1132123+LH
#12 X 3/4" SELF DRILLING/SELF TAPPING TEK SCREW	FC31817+LH
1-3/8" 2-HOLE PIPE STRAP	FC44612+LH
SIDE PURLIN, SWEDGED (12'3")	RGSSPSW12'3"+LSB

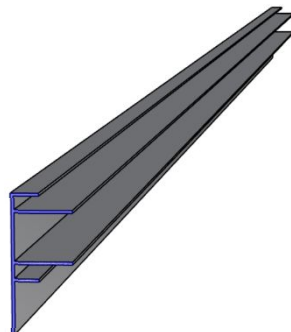
PARTS LIST (VARIOUS LENGTHS)

DESCRIPTION	PART NUMBER
3' WIDE STATIONARY BENCH	
BENCH TOP SUPPORT (36")	BPBTS36+LP
END F-BAR EXTRUSION (36")	BPEFBAR36+LP
WIDTHWISE LEG BRACE (24")	BPWLB24+LP
4' WIDE STATIONARY BENCH	
BENCH TOP SUPPORT (48")	BPBTS48+LP
END FBAR EXTRUSION (48")	BPEFBAR48+LP
WIDTHWISE LEG BRACE (36")	BPWLB36+LP
5' WIDE STATIONARY BENCH	
BENCH TOP SUPPORT (60")	BPBTS60+LP
END F-BAR EXTRUSION (60")	BPEFBAR60+LP
WIDTHWISE LEG BRACE (48")	BPWLB48+LP
5'6" WIDE STATIONARY BENCH	
BENCH TOP SUPPORT (66")	BPBTS66+LP
END F-BAR EXTRUSION (66")	BPEFBAR66+LP
WIDTHWISE LEG BRACE (54")	BPWLB54+LP
6' WIDE STATIONARY BENCH	
BENCH TOP SUPPORT (72")	BPBTS72+LP
END F-BAR EXTRUSION (72")	BPEFBAR72+LP

ILLUSTRATED PARTS ASSEMBLY



1-3/8" 2-HOLE
PIPE STRAP



F-BAR
EXTRUSION



BENCH LEG
30" LENGTH



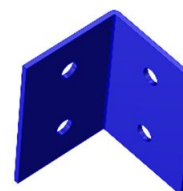
#8 X 1/2" PAN HEAD



#12 X 3/4 " TEK SCREW



1" SQ STEEL
TOP SUPPORT



BENCH CORNER
PROTECTOR



1" SQ x 12"
STEEL SPLICE



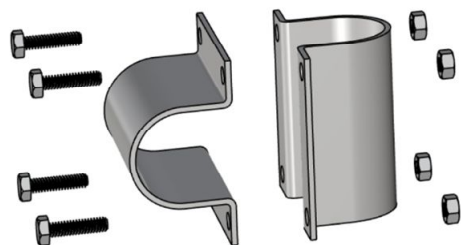
LENGTHWISE
LEG BRACE



SIDE PURLIN
SWEDGED

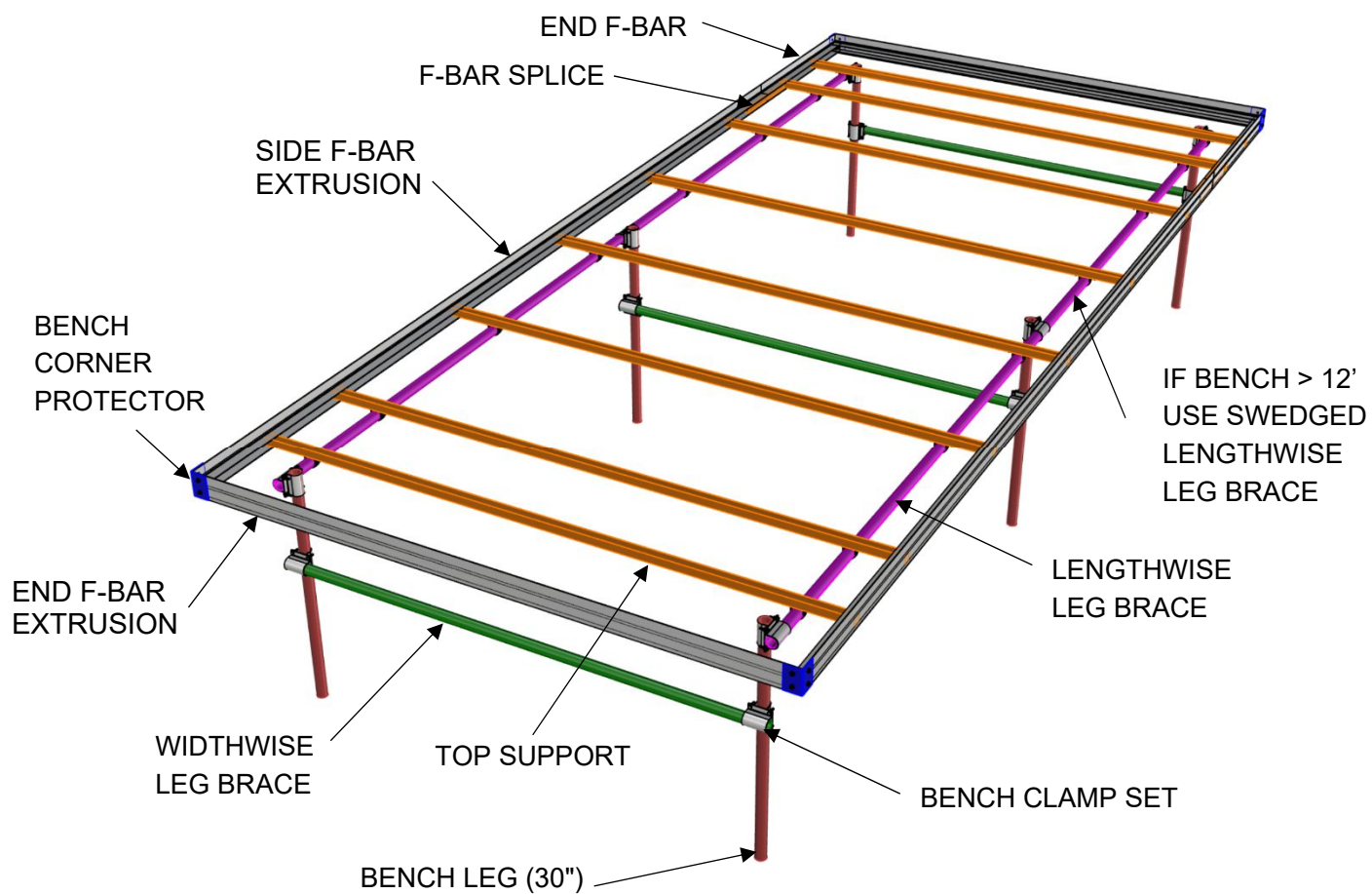


WIDTHWISE
LEG BRACE



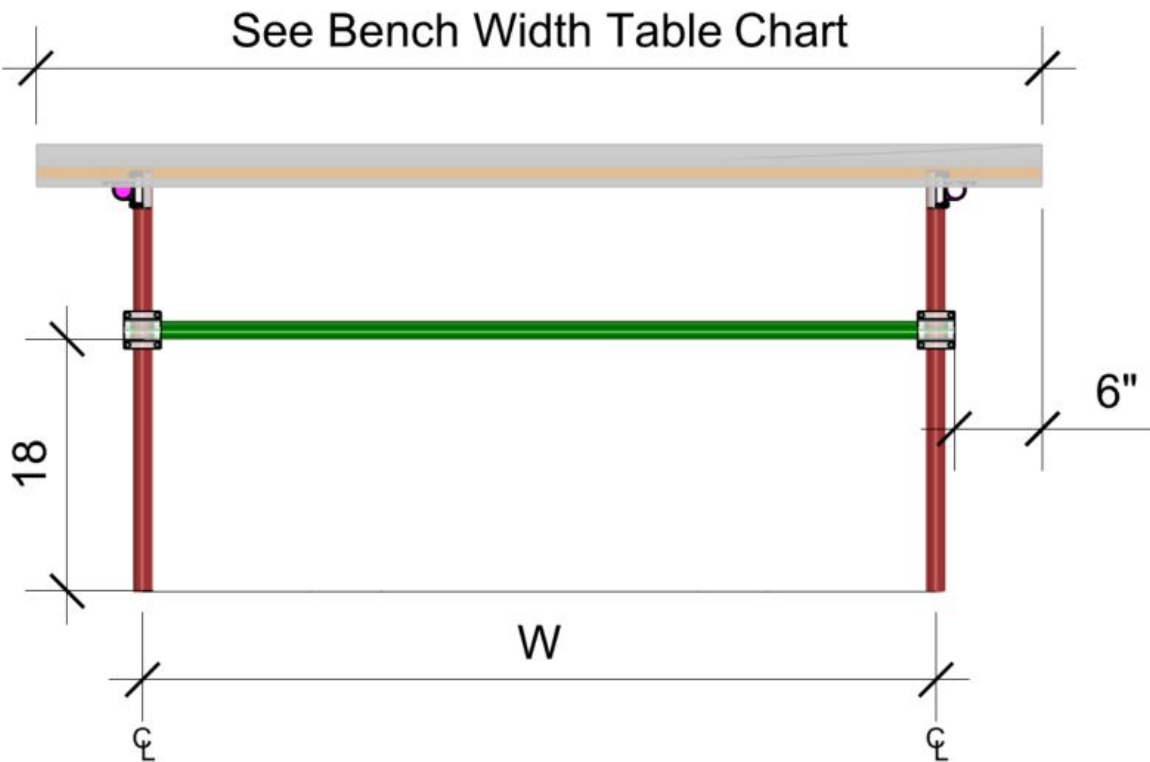
BENCH CLAMP SET

ILLUSTRATED PARTS ASSEMBLY CONTD



ABOVE GROUND BENCH WIDTH PROFILE

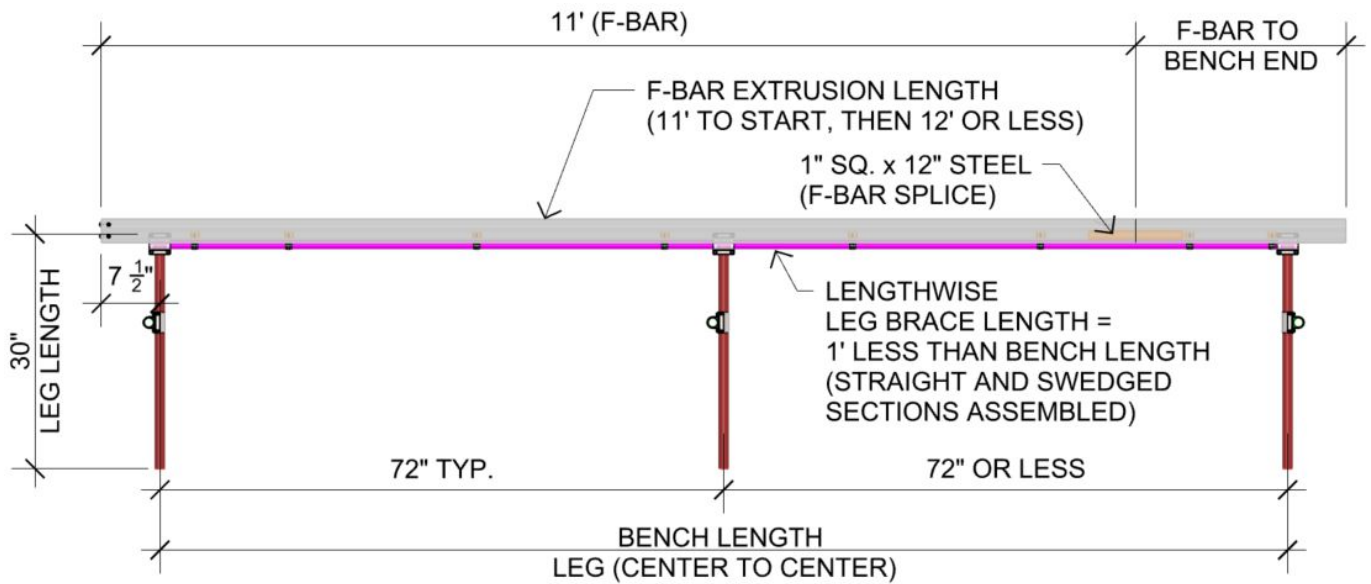
BENCH, F-BAR EXTRUSION WIDTHS



STATIONARY BENCH WIDTH TABLE CHART

STATONARY BENCH	
BENCH WIDTH	W
3'	22-3/4"
4'	32-3/4"
5'	44-3/4"
6'	56-3/4"
6'6"	62-3/4"

ABOVE GROUND BENCH LENGTH PROFILE



ASSEMBLY INSTRUCTIONS

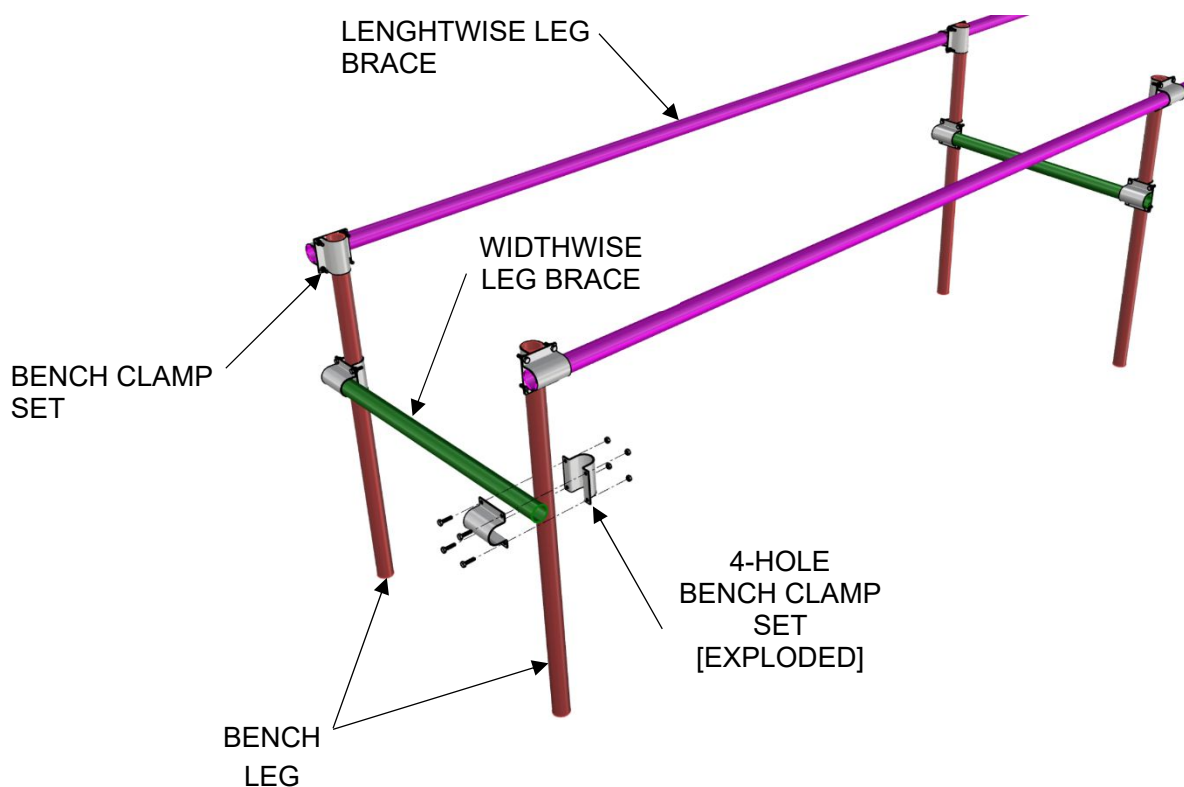
STEP 1: ASSEMBLY OF BENCH FRAME

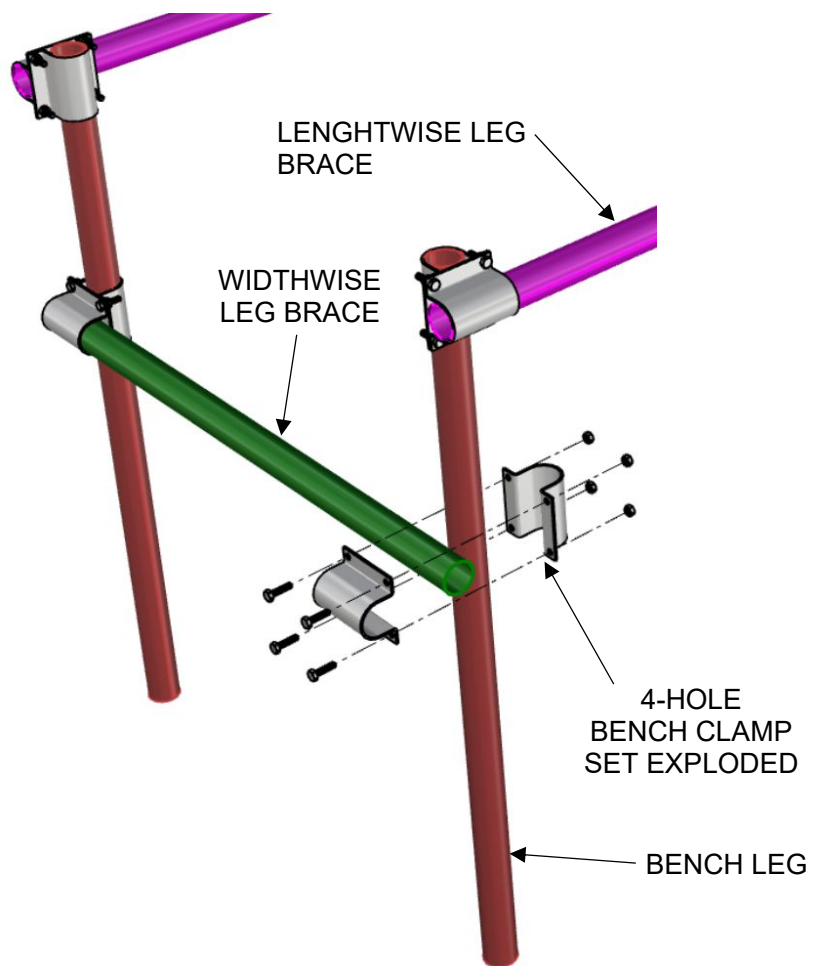
Parts Needed for STEP 1

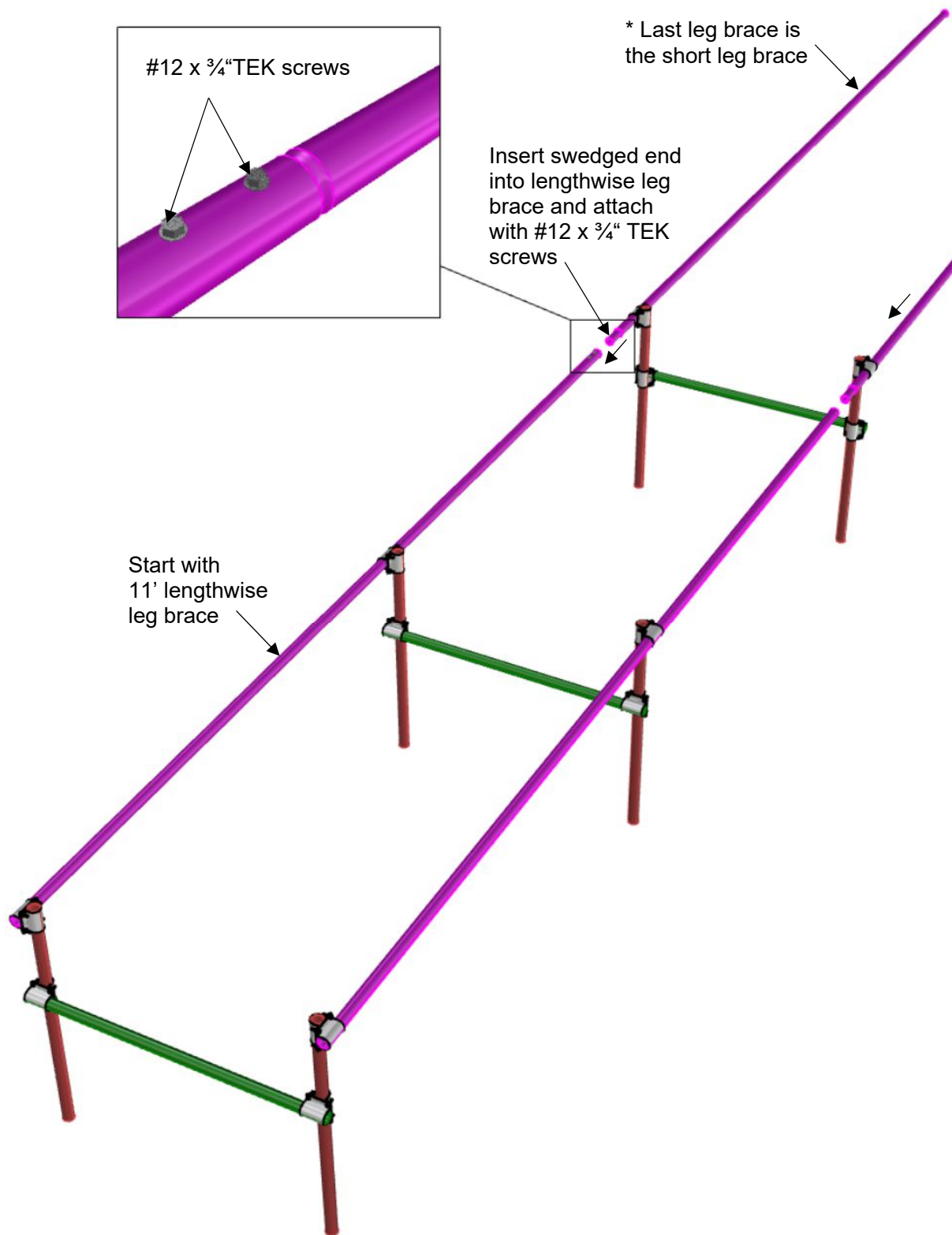
- *Wrenches*
- *Cordless drill/impact driver*
- *Bench legs*
- *Bench clamp set*
- *Lengthwise leg brace*
- *Widthwise leg brace*

1.0 Attach two bench legs to widthwise leg brace 18" from the floor, using bench clamp set. Repeat for each set of legs. See [Stationary Bench Width Table Chart](#) for the size of your bench.

1.1 With two people, attach the lengthwise leg brace to the leg assembly. Repeat each leg assembly.

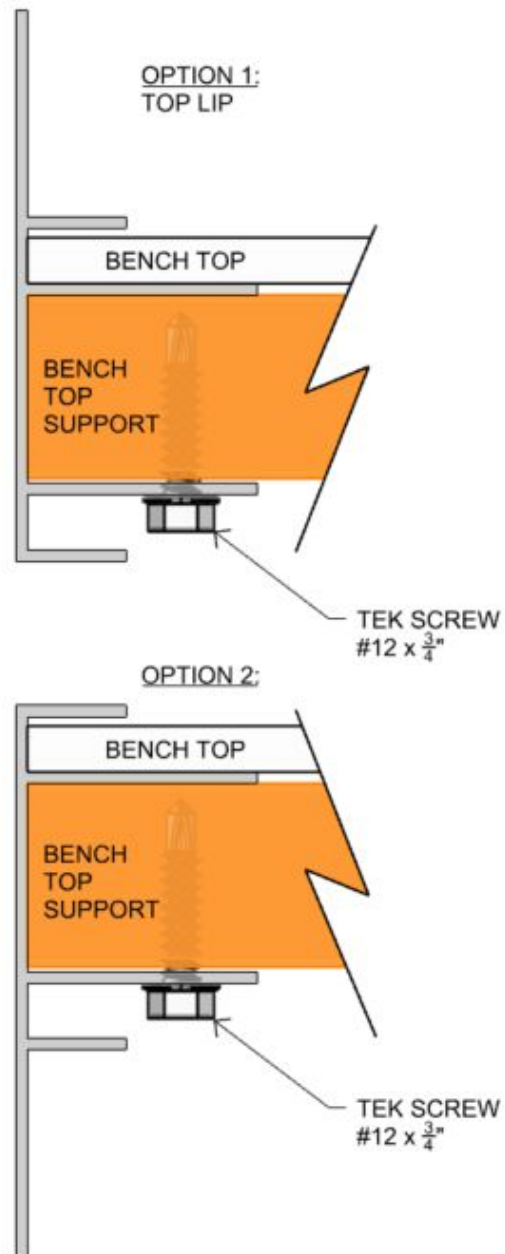






F-BAR EXTRUSION INSTALLATION OPTIONS

Determine orientation of F-bar for your application before proceeding to the next step.



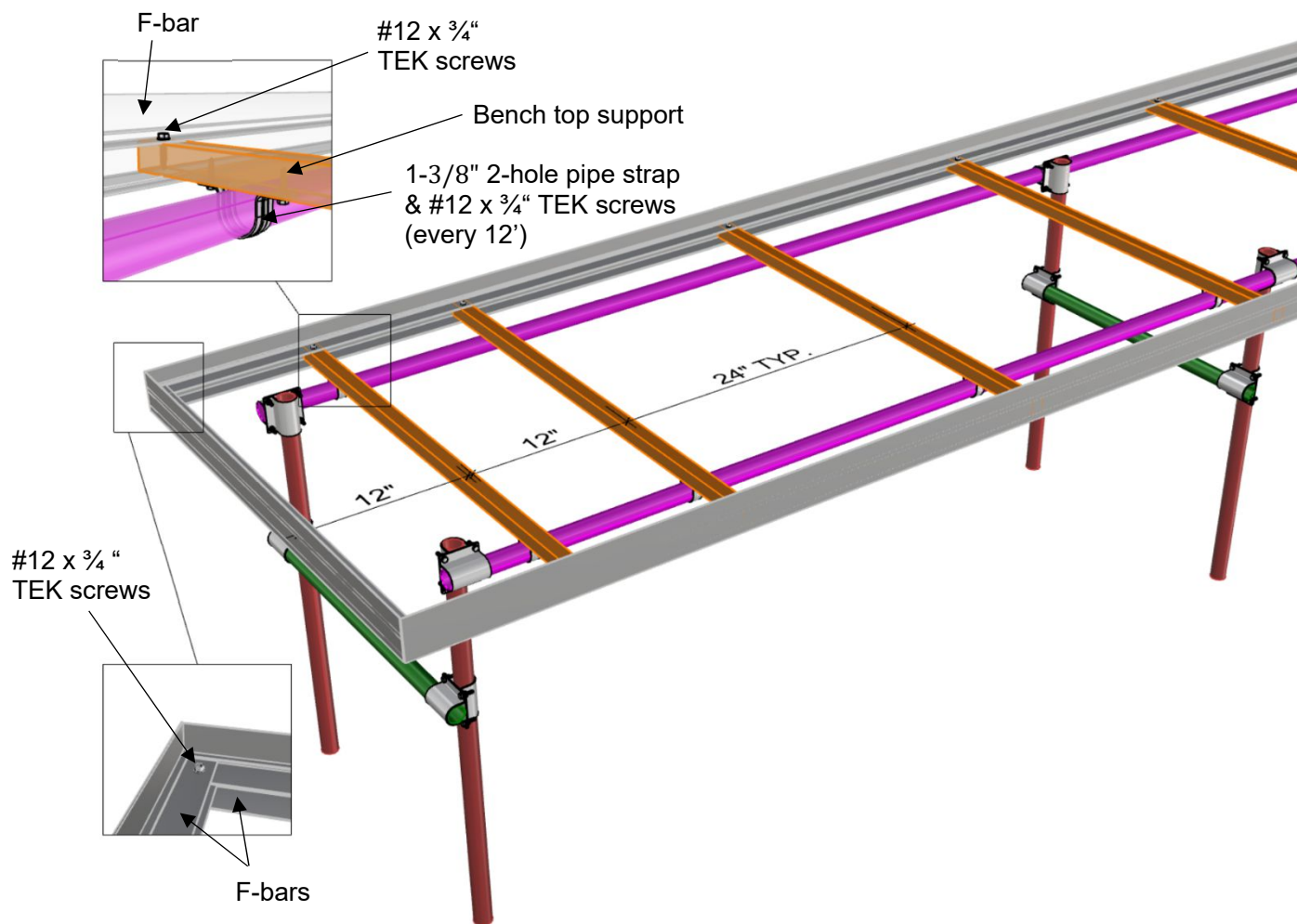
STEP 2: BENCH TOP SUPPORT INSTALLATION

Parts Needed for STEP 2

- Bench top support
- 1-3/8" 2-hole pipe strap
- #12 X 3/4" self-drilling/self-tapping TEK screw
- F-bar extrusion
- Wrenches
- Cordless drill/impact driver

NOTES:

1. All TEK screws in bench top frame are #12 x 3/4" screws.
2. There is a bench top support 12" from each end, the next bench top support is 12" and all others are spaced 24".
3. On benches longer than 20': First side F-bar extrusion is 19' followed by 20' long F-bars (if needed) until short F-bar is installed.
4. Install 1-3/8" 2-hole pipe straps every 12' on lengthwise leg brace to top support

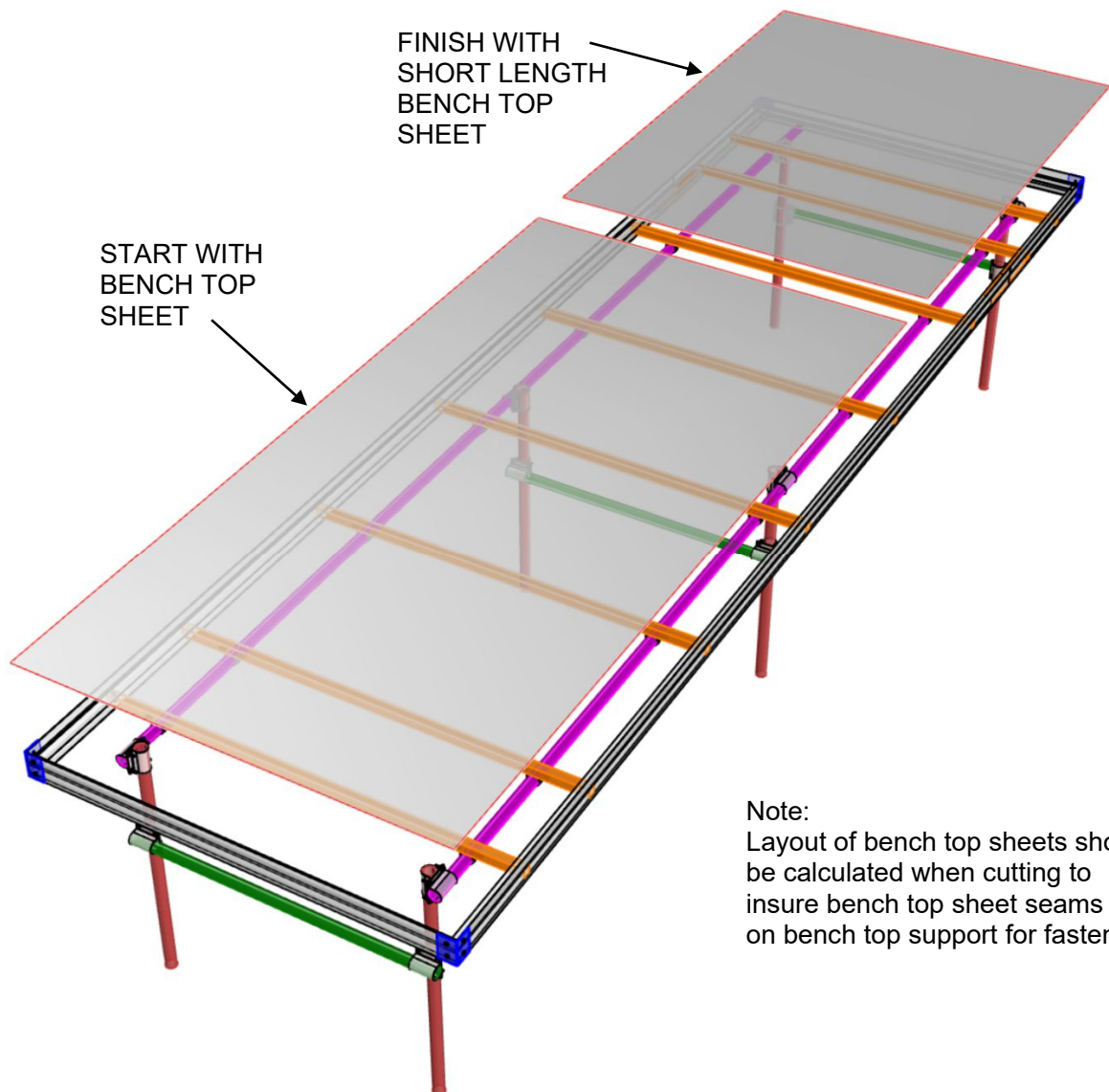


STEP 3: EXPANDED METAL TOP INSTALLATION

Parts Needed for STEP 3

- Expanded metal sheets
- Black cable ties
- Wrenches
- Cordless drill/impact driver

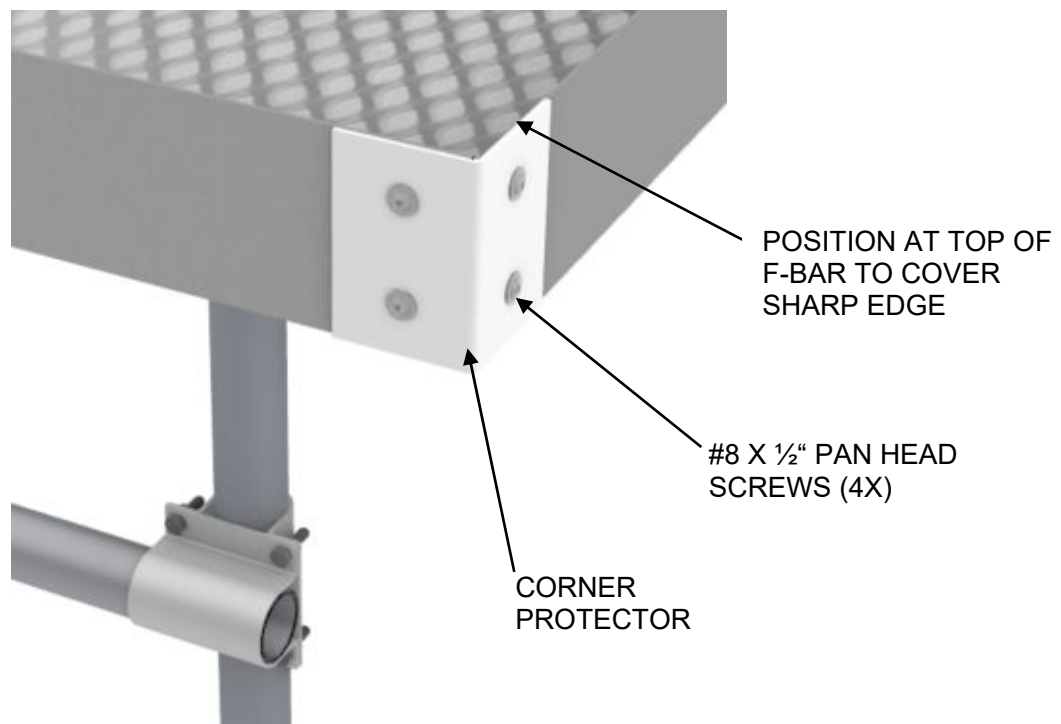
NOTE: Attach bench top sheet with black cable ties.



STEP 4: CORNER PROTECTOR INSTALLATION

Parts Needed for STEP 4

- Corner protector
- #8 x ½" pan head screws
- Cordless drill/impact driver



LIMITED WARRANTY

Rimol Greenhouse Systems, LLC. (RGS) warrants to only the original purchaser ("Buyer") that the greenhouse frame(s) manufactured by RGS will be free of defects in materials and workmanship for a period of five (5) years. This limited warranty shall not be effective unless the Buyer's greenhouse is installed on level ground and there are no other objects or structures within ten (10) feet of the greenhouse, and the Buyer hereby waives any claims under this warranty in the event these two conditions are not satisfied.

This warranty covers all defects in material and workmanship, EXCEPT:

1. Damage resulting from accident, misuse, abuse, neglect or from other than normal and ordinary use of the frame(s).
2. Damage resulting from failure to use the product in accordance with RGS specifications and instructions.
3. Damage resulting from repair or attempted repair by anyone other than RGS or an authorized repair contractor or facility.
4. Damage resulting from the use or installation of any other equipment or products used in the greenhouse.

This warranty applies only to the products being supplied by RGS and physically attached to the RGS products at the RGS factory. Defects in equipment installed with any RGS product, or defects in the installation of the RGS product, whether or not sold by RGS, are warranted, if at all, by the installers or manufacturers of such equipment, and are not covered by this warranty.

RGS makes no warranties other than those stated above and specifically does not warrant that any of the RGS frames, parts or products are of a merchantable equality or that they can be used for any particular purpose by the buyer.

RGS shall have the right to inspect any parts before taking corrective measures under this warranty. RGS shall be notified of any warranty claim within 48 hours of damage. Proof of purchase must be furnished with any claim.

LIMITATION OF LIABILITY

In no event will RGS be liable for incidental, consequential, special or indirect damages, lost business profits, regardless of the form of action, whether in contract, tort (including negligence), breach of contract, breach of warranty or otherwise, even if RGS has been advised as to the possibility of same. Buyer's sole and exclusive remedy is repair or replacement, at RGS's option, of any defective parts or workmanship. In the event this exclusive remedy fails of its essential purpose, Buyer's exclusive remedy shall be refund of the defective part.

JURISDICTION

Any disputes arising between RGS and Buyer shall be governed by New Hampshire law without regard to conflicts of law principles. Buyer hereby submits, and waives any objection, to the exclusive personal and subject matter jurisdiction by New Hampshire courts and submits, and waives any objection, to New Hampshire as the proper venue for any disputes.