

3	ADDED LRV 7	LEV	9-7-88	6	ADDED SHUTTER MOTOR BRACKET SPACE	ASST	
4	REVISED FOR	DEB	3-27-89		INSTR. NO. 113		1-24-86
5	REV. ASSY. IN	LEV	4-17-89	7	ADDED LRV 39 TO FIGURE 3	DL	7-24-86
				8	ADDED LRV 39 NOTE	DEB	8-1-95

ITEM NO.	DRWG/STOCK NUMBER	PART NO.	PART OR ASSY DESCRIPTION	MATE	JWG SIZE	QTY PER UNIT
----------	-------------------	----------	--------------------------	------	----------	--------------

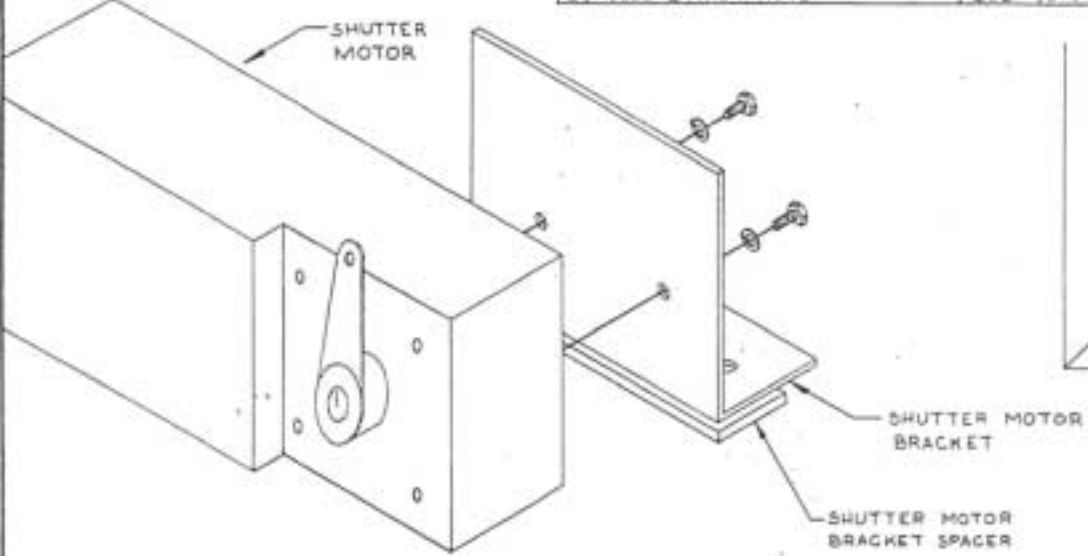


FIGURE 2

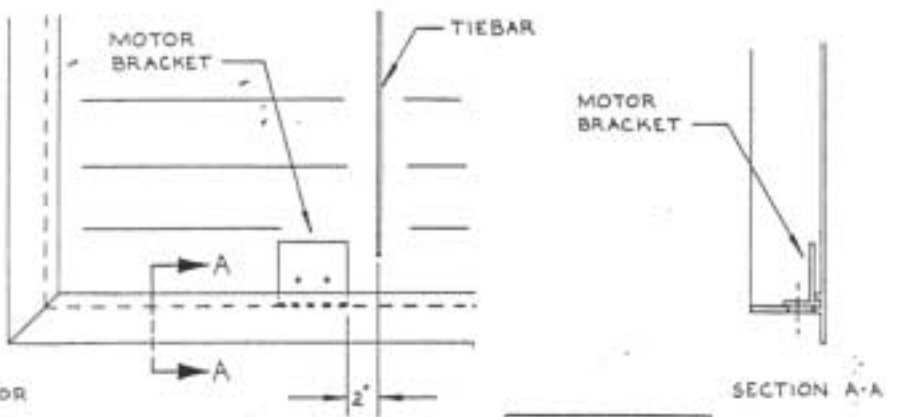


FIGURE 1

ASSEMBLY OF SINGLE PANEL MOTORIZED SHUTTER  
MODELS LRV 16, 21, 23, 27, 33, & 39

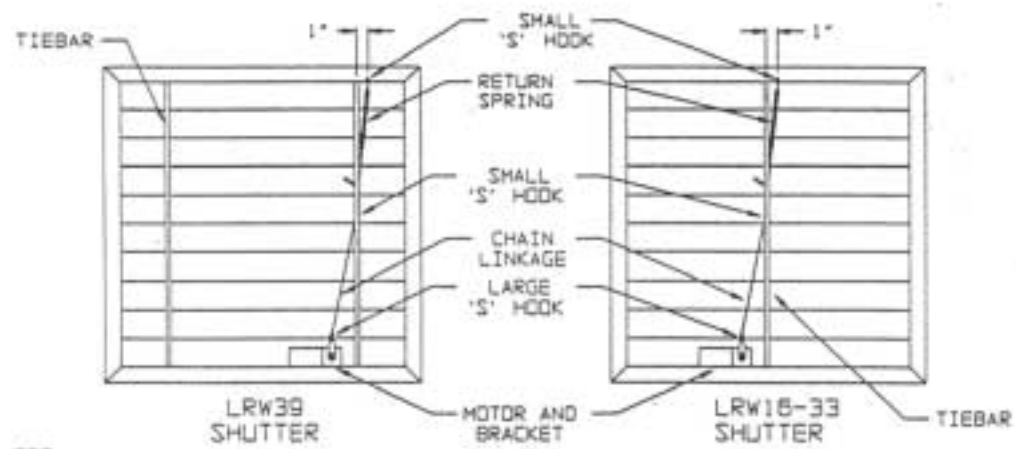


FIGURE 3

NOTE: LRW39 IS CURRENTLY A DOUBLE PANEL SHUTTER. SEE DWG. 401-121

1. IN ORDER TO MOTORIZED THE SHUTTER, HOLES MUST BE DRILLED IN THE BOTTOM SHUTTER FRAME TO MOUNT THE SHUTTER MOTOR BRACKET. WORKING FROM THE BACK OF THE SHUTTER (TIEBAR SIDE), PLACE THE SHORT LEG OF THE BRACKET ON THE INSIDE BOTTOM EDGE OF THE SHUTTER FRAME, APPROXIMATELY 2" TO THE LEFT OF THE TIEBAR. ON THE DUAL TIEBAR LRW39, USE THE TIEBAR ON THE RIGHT SIDE OF THE SHUTTER. PUSH THE MOTOR BRACKET TO THE REAR OF THE SHUTTER SO THAT THE BOTTOM SHUTTER BLADE, WHEN OPEN, DOES NOT CONTACT THE BRACKET. USING THE MOTOR BRACKET AS A TEMPLATE, MARK AND DRILL TWO (2) 3/16" DIAMETER HOLES IN THE BOTTOM SHUTTER FRAME. SEE FIGURE 1.
2. VERIFY THAT THE CRANK ARM IS MOUNTED ON THE MOTOR AS SHOWN IN FIGURE 2. IF NOT, THEN TURN CRANK ARM OVER TO MATCH FIGURE 2.
3. PLACE SHUTTER MOTOR BRACKET SPACER IN THE NOTCH ON THE INSIDE BOTTOM OF THE SHUTTER FRAME. MOUNT THE MOTOR BRACKET, WITH THE MOTOR ATTACHED, TO THE SHUTTER BY BOLTING THROUGH THE SHUTTER MOTOR BRACKET, THE SHUTTER MOTOR BRACKET SPACER AND THE DRILLED HOLES IN THE SHUTTER FRAME USING THE TWO (2) #10 BOLTS, LOCK WASHERS AND HEX NUTS SUPPLIED.
4. PLACE A SMALL S-HOOK IN THE HOLE IN THE TIEBAR APPROXIMATELY HALFWAY UP THE TIEBAR. MOVE THE CRANK ARM TO THE "UP" POSITION, AS IN FIGURE 3. WITH THE SHUTTER BLADES IN THE CLOSED POSITION, CUT THE CHAIN LINKAGE TO THE CORRECT LENGTH AND ATTACH IT TO THE S-HOOK IN THE TIEBAR. DISCARD EXTRA CHAIN LINKAGE AND S-HOOKS.
5. TO MOUNT THE RETURN SPRING, DRILL A 1/8" DIA. HOLE APPROXIMATELY 1" TO THE RIGHT OF THE TIEBAR IN THE FLAT EDGE OF THE UPPER FRAME. CONNECT A SMALL S-HOOK TO THE END OF THE RETURN SPRING. ATTACH THIS S-HOOK TO THE DRILLED HOLE IN THE FRAME AND THEN CONNECT THE WIRE END OF THE RETURN SPRING TO AN UPPER HOLE IN THE TIEBAR. ADJUST THE TENSION OF THE SPRING TO HOLD THE SHUTTER BLADES FIRMLY CLOSED.
6. CHECK VOLTAGE AND PHASE ON NAMEPLATE OF SHUTTER MOTOR. CONNECT WIRING AND TEST SHUTTER OPERATION.

8	ADDED LRV 16, 21, 23 TO DESC.	MLM	11-18-85
1	REVISED FOR NEW MTR. ARM	MLM	8-27-85
NO.	REVISION	BY	DATE
MATERIAL		DO NOT SCALE THIS DRAWING	

**Coolair**  
AMERICAN COOLAIR CORPORATION  
Jacksonville, Florida

DESCRIPTION	DR. LLU	CR.	APPR.
ASSEMBLY INSTRUCTIONS FOR MOTORIZED OPERATION OF LRV 16, 21, 23, 27, 33 & 39 SHUTTERS	SCALE N.T.S.	DWG. NO. 401-130	
	DATE 8-16-84	SHEET 1	OF 1